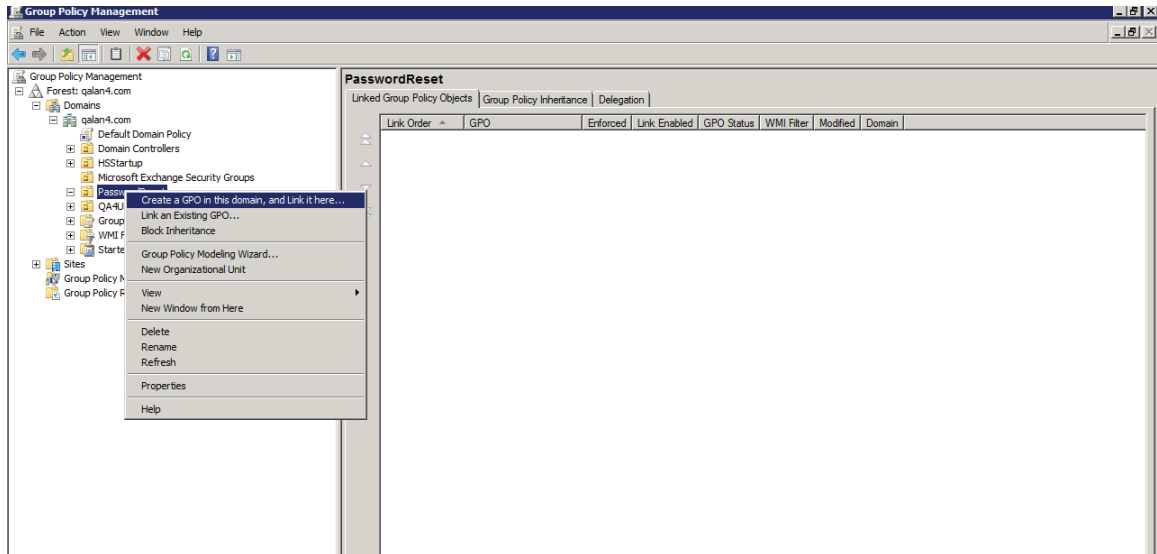


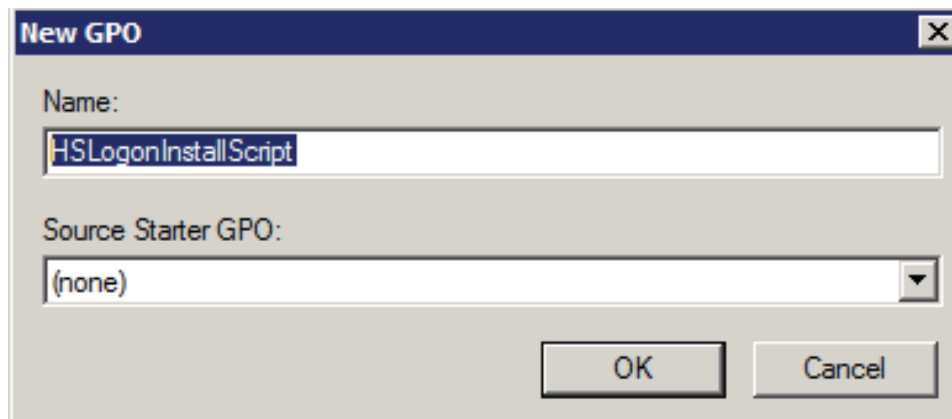
User Logon Script

The following instructions will set up a logon script through a group policy:

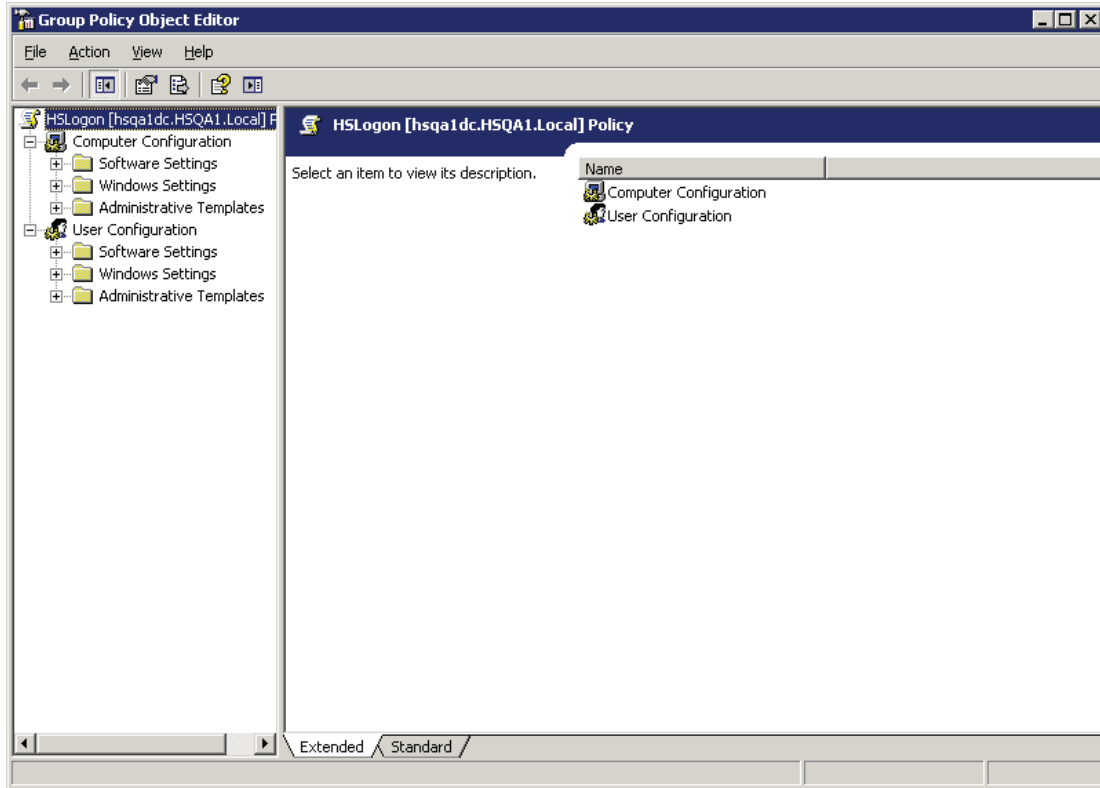
1. Open “**Group Policy Management**” (this can be found from the Start Menu under “**Administrative tools**”)
2. Select the Domain or the OU on which you wish to set the group policy (or GPO).
3. Right Click on the domain or OU and select “**Create a GPO in this domain, and Link it here...**”



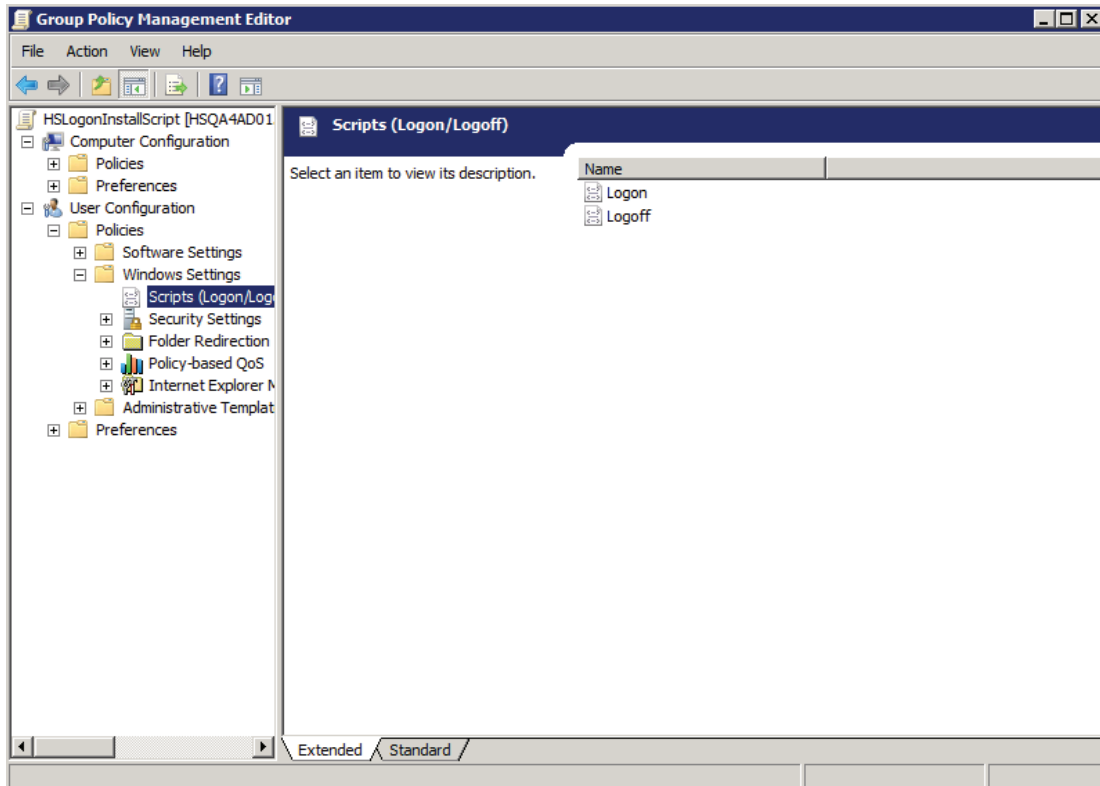
4. On the New GPO form, enter a name for the GPO you wish to create and click the **OK** button.



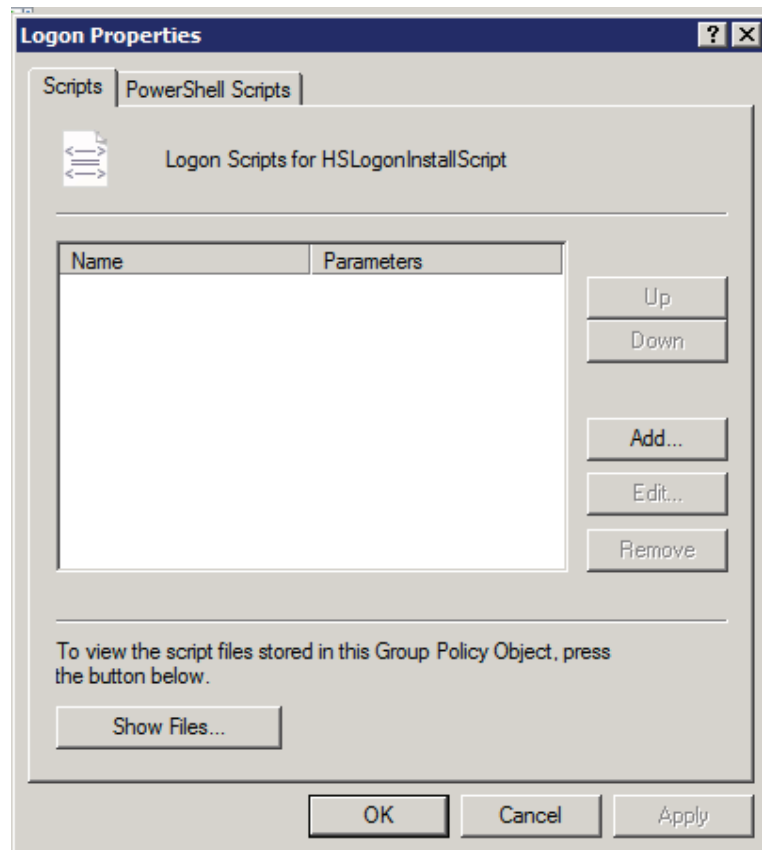
5. Right click on the newly created GPO and click **Edit**. This will display the Group Policy Editor.



6. Expand "**Windows Settings**" under "**User Configuration**" and select "**Scripts (Logon/Logoff)**"



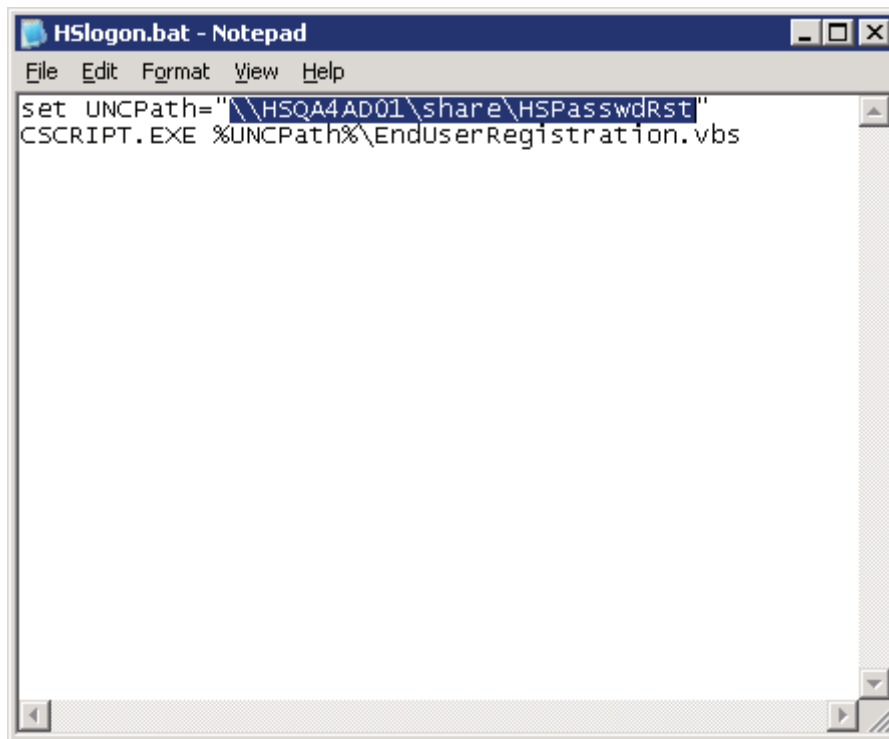
7. With "**Scripts**" highlighted, double-click on "**Logon**" from the right pane. This will display the "**Logon Properties**" window



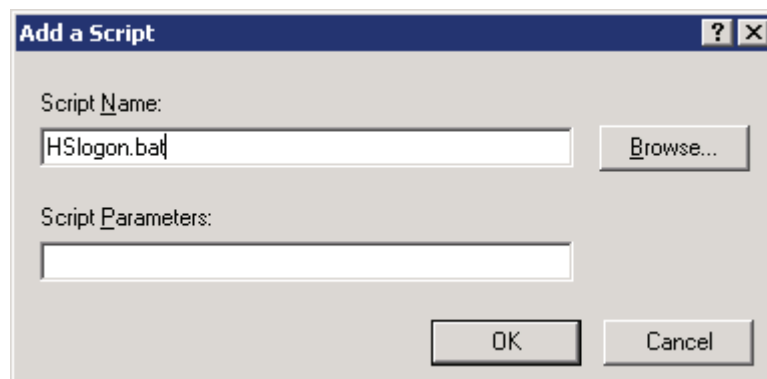
8. On this window, we will add the script file that will be run by the GPO. Click on the **Show Files** button and copy the “**HSlogon.bat**” batch file into the window that appears and close the window

***** NOTE: The scripts are deployed by the password reset installer under the [INSTALL PATH]\ HSPwdReset\HSPasswdRst\ folder and are also copied to a shared network location. If the shared network location of the HSPasswdRst folder is changed, batch file will need to be modified.**

To do this, open the “HSlogon.bat” file in any text editor and replace the highlighted area in the following screenshot with the new UNC path. Be sure not to append the end of the path with a slash “\”



9. With the script now stored in this GPO, click on **Add** button.
10. Click on the **Browse** button and select the **"HSlogon.bat"** file



11. Click on the **OK** button.
12. Click **Apply** and **OK** on the **"Logon Properties"** window
13. **Close** the GPO Editor