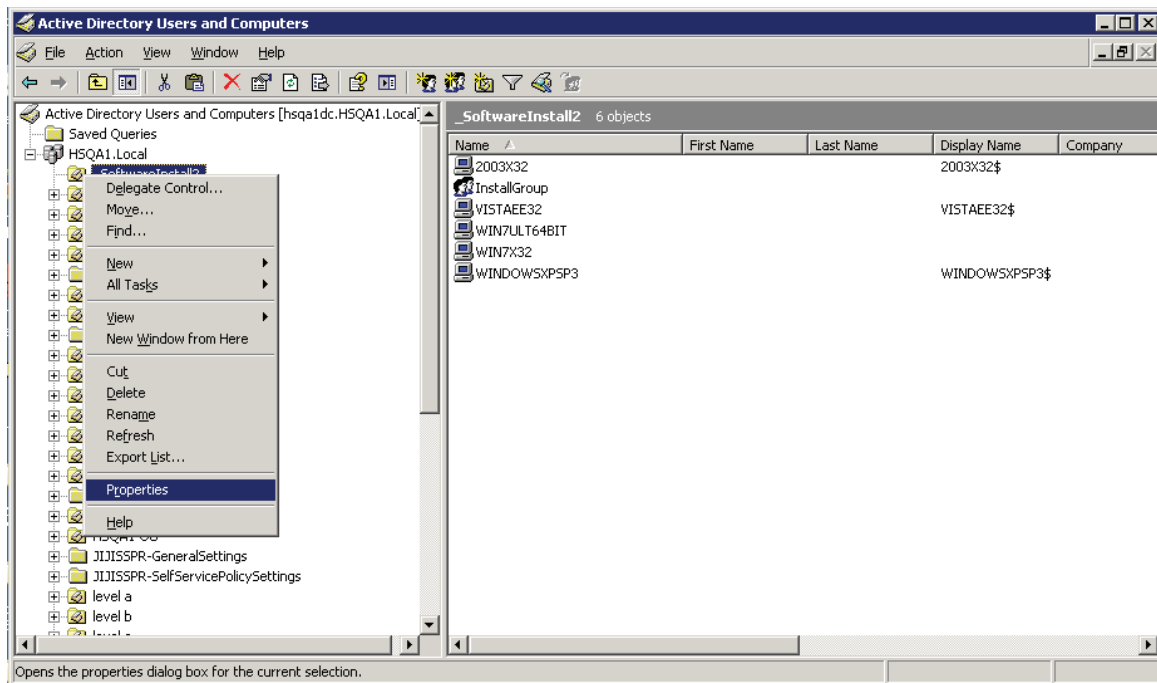
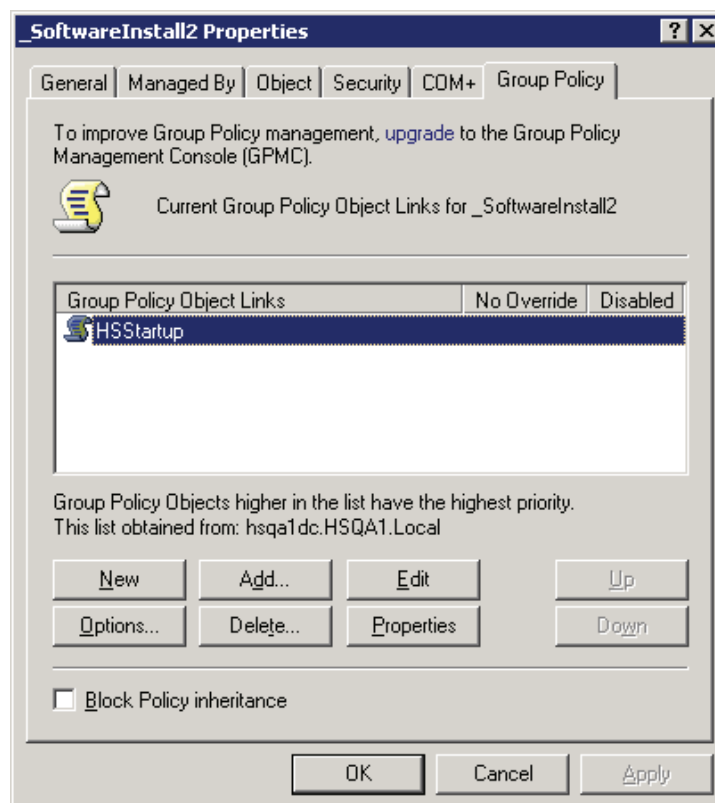


Installing/Uninstalling Client-Side Password Reset Components Through a Group Policy (GPO)

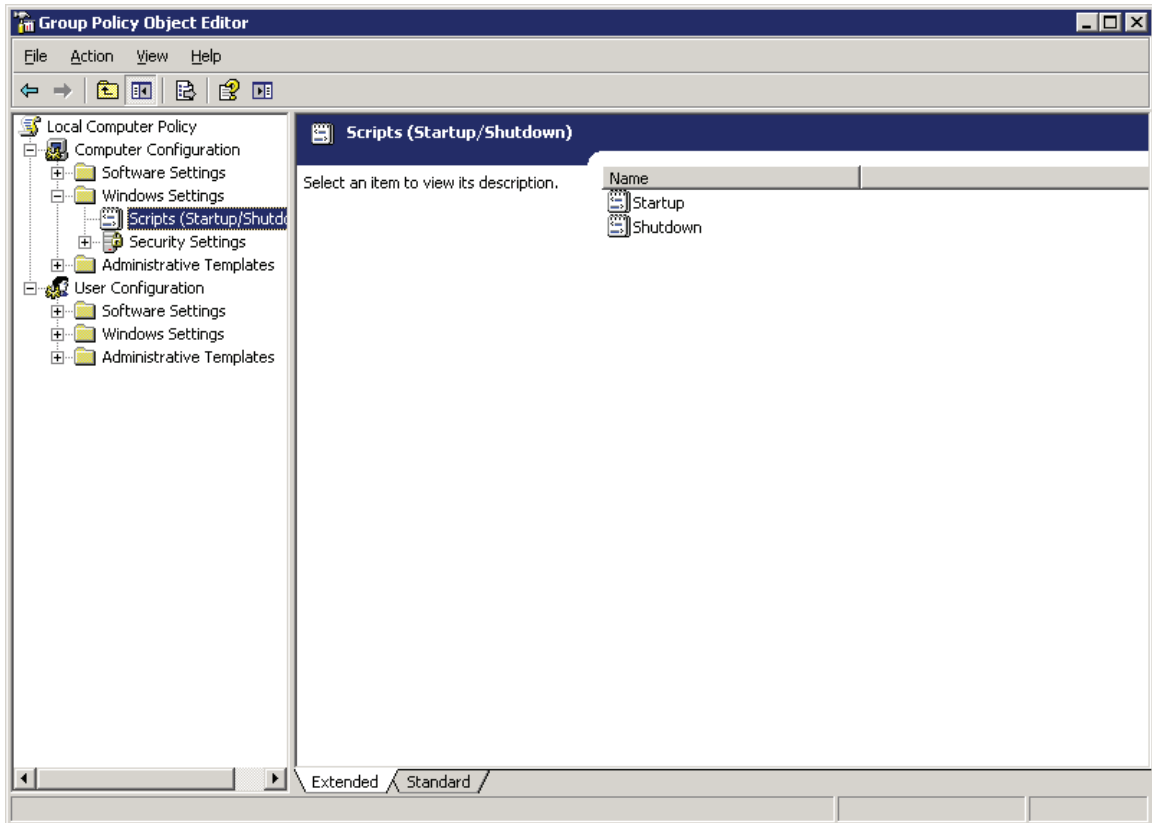
1. Right-click on the domain or OU on which you wish to create the group policy and select Properties



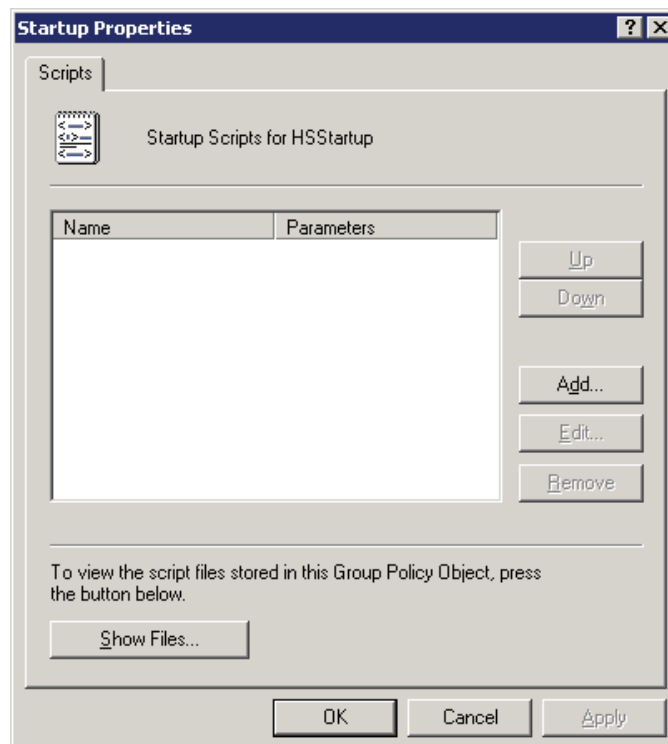
2. On the Group Policy tab, click the **New** button and enter a name for the GPO you wish to create.



3. With the GPO highlighted, click on the **Edit** button. This will display the Group Policy Editor.



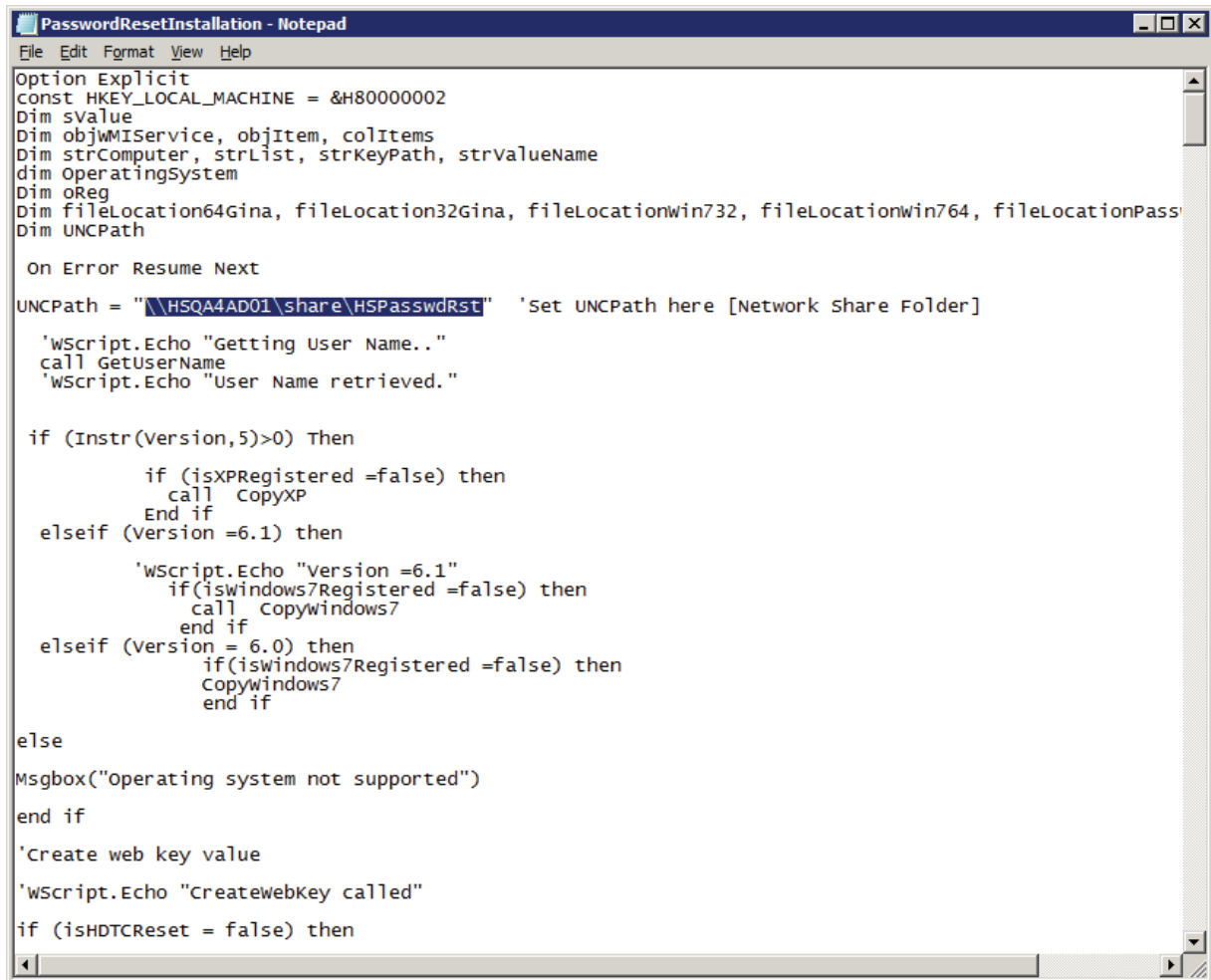
4. Expand “**Windows Settings**” under “**Computer Configuration**” and select “**Scripts (Startup/Shutdown)**”
5. With “**Scripts**” highlighted, double-click on “**Startup**” from the right pane. This will display the “**Startup Properties**” window.



6. On this window, we will add the script file that will be run by the GPO. Click on the **Show Files** button and copy the "**PasswordResetInstallation.vbs**" or "**PasswordResetUnInstallation.vbs**" script into the window that appears and close the window

NOTE: The scripts are deployed by the password reset installer under the **[INSTALL PATH]\HSPwdReset\HSPasswdRst** folder. If the location of the Installation files is changed, script files will need to be modified.

To do this, open the "**PasswordResetInstallation.vbs**" or "**PasswordResetUnInstallation.vbs**" file in any text editor and replace the highlighted area in the following screenshot with the new UNC path. Be sure not to append the end of the path with a slash "\



```
Option Explicit
Const HKEY_LOCAL_MACHINE = &H80000002
Dim sValue
Dim objWMIService, objItem, colItems
Dim strComputer, strList, strKeyPath, strValueName
Dim OperatingSystem
Dim oReg
Dim fileLocation64Gina, fileLocation32Gina, fileLocationWin732, fileLocationWin764, fileLocationPass
Dim UNCPath

On Error Resume Next

UNCPath = "\\HSQA4AD01\share\HSPasswdRst" 'set UNCPath here [Network Share Folder]

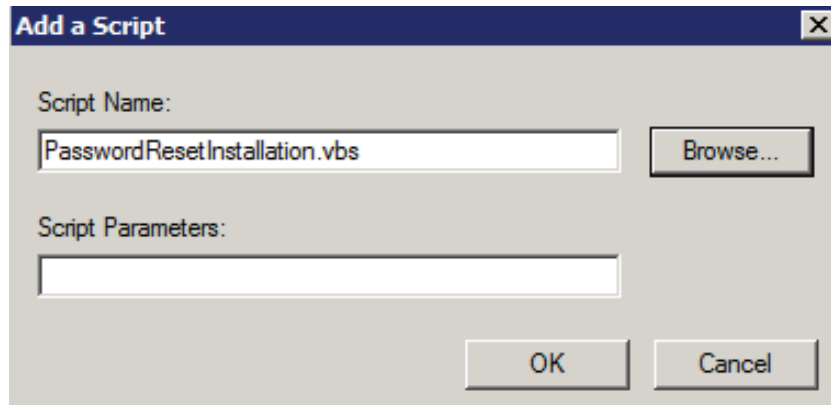
'wscript.Echo "Getting User Name.."
call GetUserName
'wscript.Echo "User Name retrieved."

if (Instr(Version,5)>0) Then
    if (isXPRegistered =false) then
        call CopyXP
    End if
elseif (Version =6.1) then
    'wscript.Echo "Version =6.1"
    if(iswindows7Registered =false) then
        call Copywindows7
    end if
elseif (Version = 6.0) then
    if(iswindows7Registered =false) then
        Copywindows7
    end if
else
Msgbox("operating system not supported")
end if

'create web key value
'wscript.Echo "Createwebkey called"

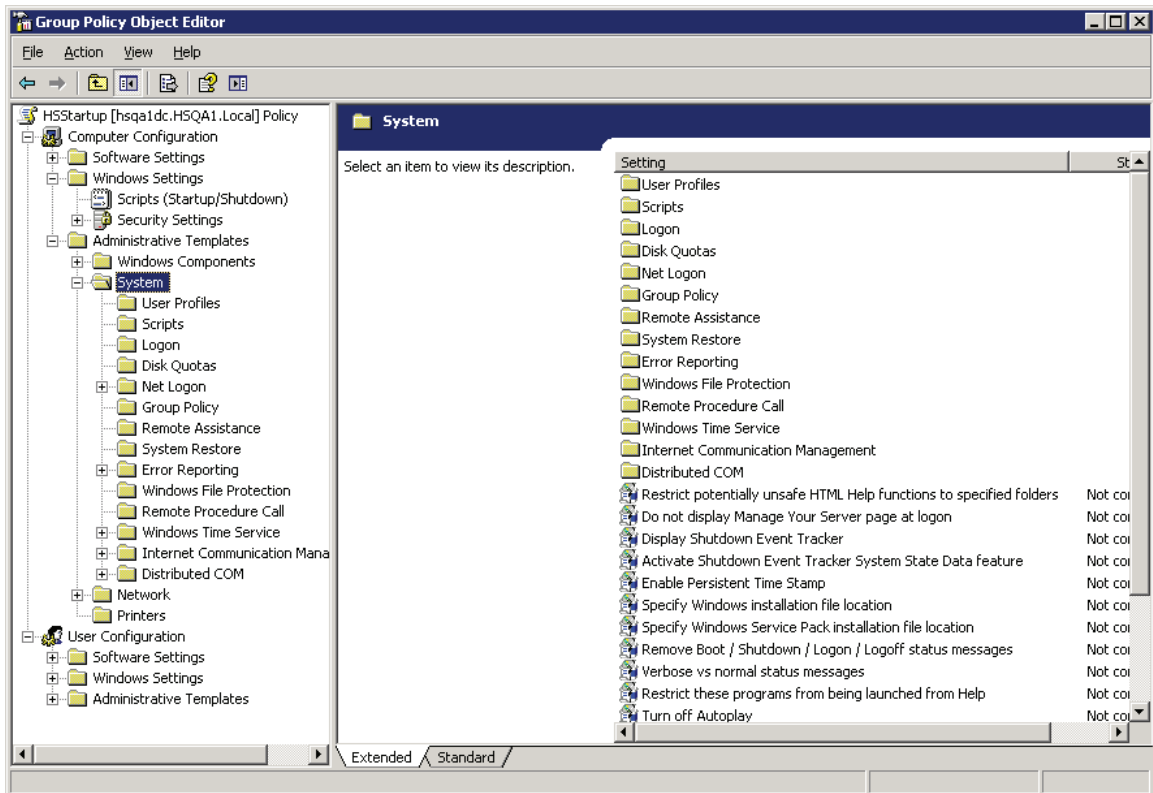
if (isHDCReset = false) then
```

7. With the script now stored in this GPO, click on **Add** button.
8. Click on the **Browse** button and select the “**PasswordResetInstallation.vbs**” or “**PasswordResetUnInstallation.vbs**” file

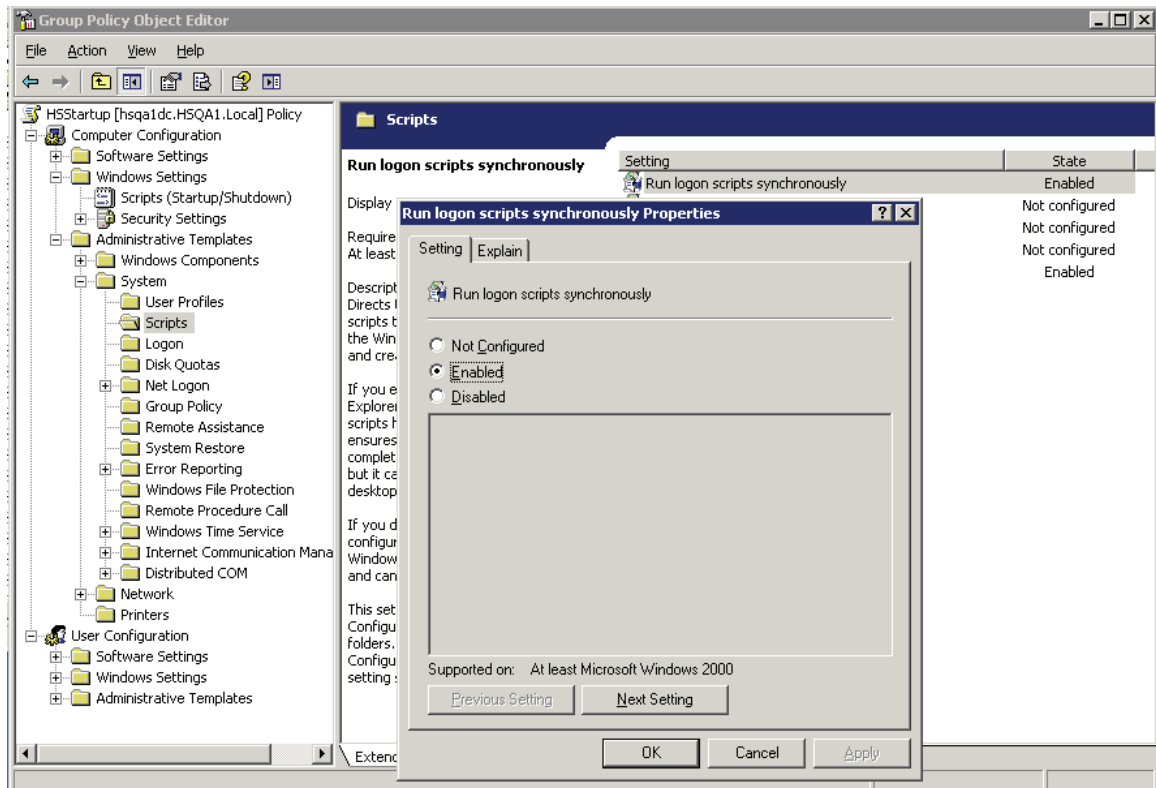


Once completed, click **OK** on the “**Add a Script**” box and again for the Startup Properties box.

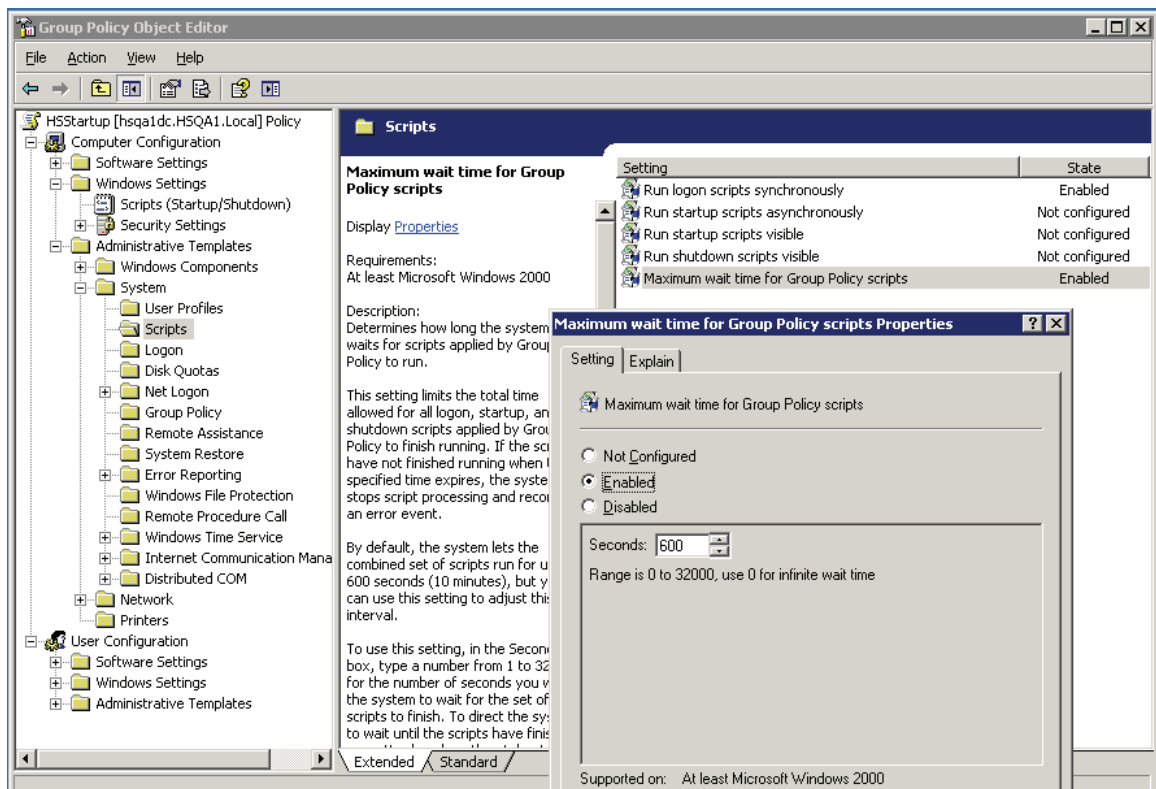
9. With the script added, next we will set the administrative template to be used. From the Group Policy Object Editor, Select “**Scripts**” found under **Computer Configuration > Administrative Templates > System > System**



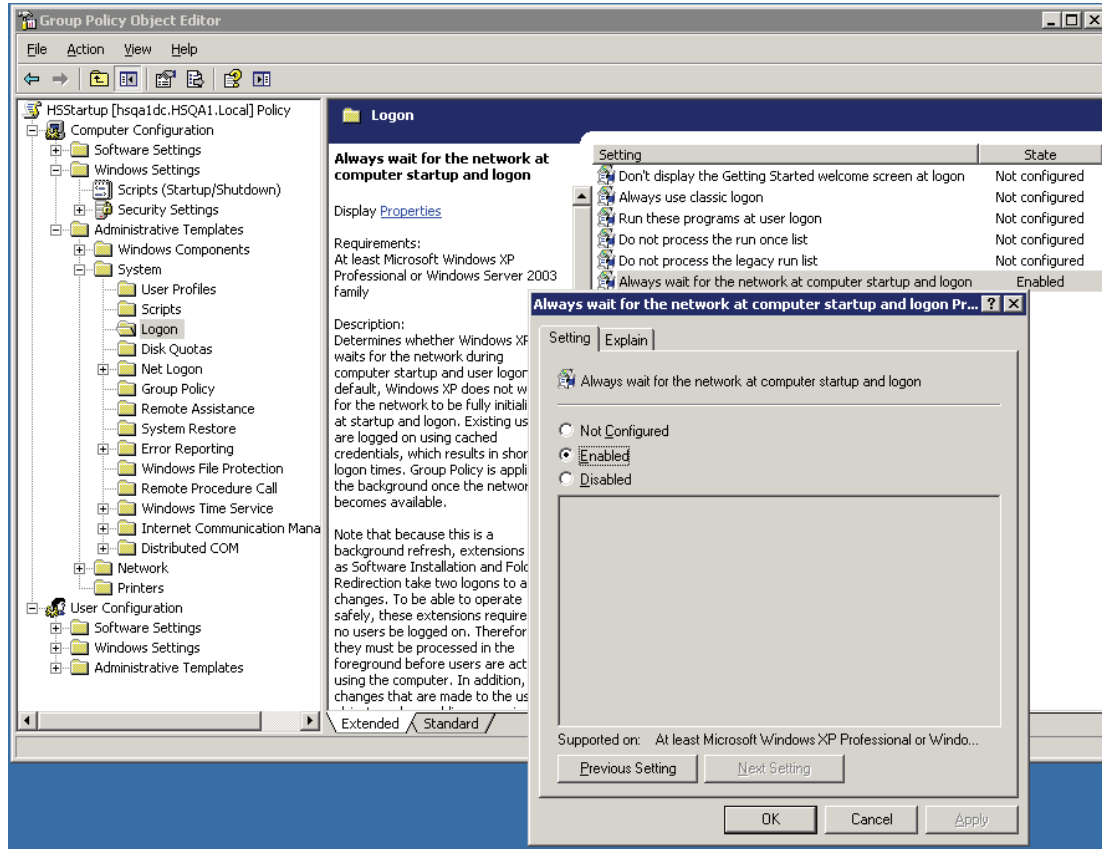
10. Within the right pane, double-click “Run logon scripts synchronously”, select “Enabled”, and click OK



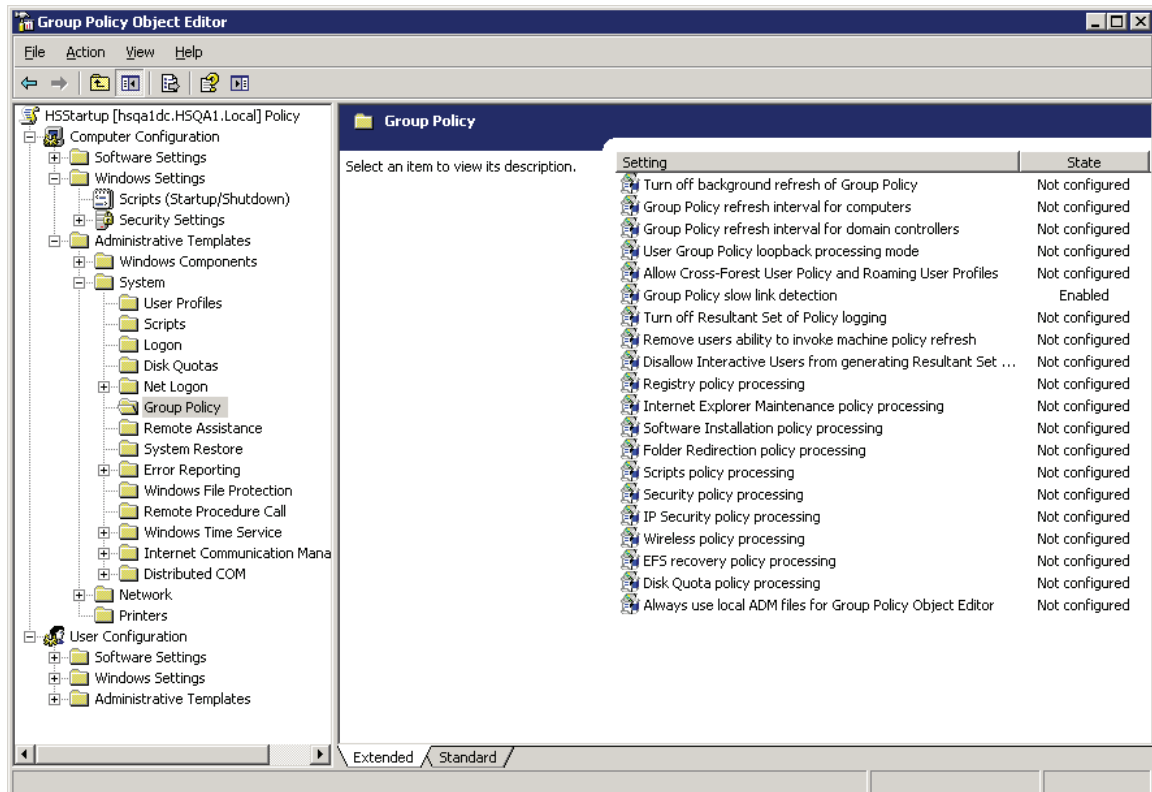
11. With scripts still selected, from the right pane, double-click “Maximum wait time for group policy scripts”, select “Enabled”, and click OK

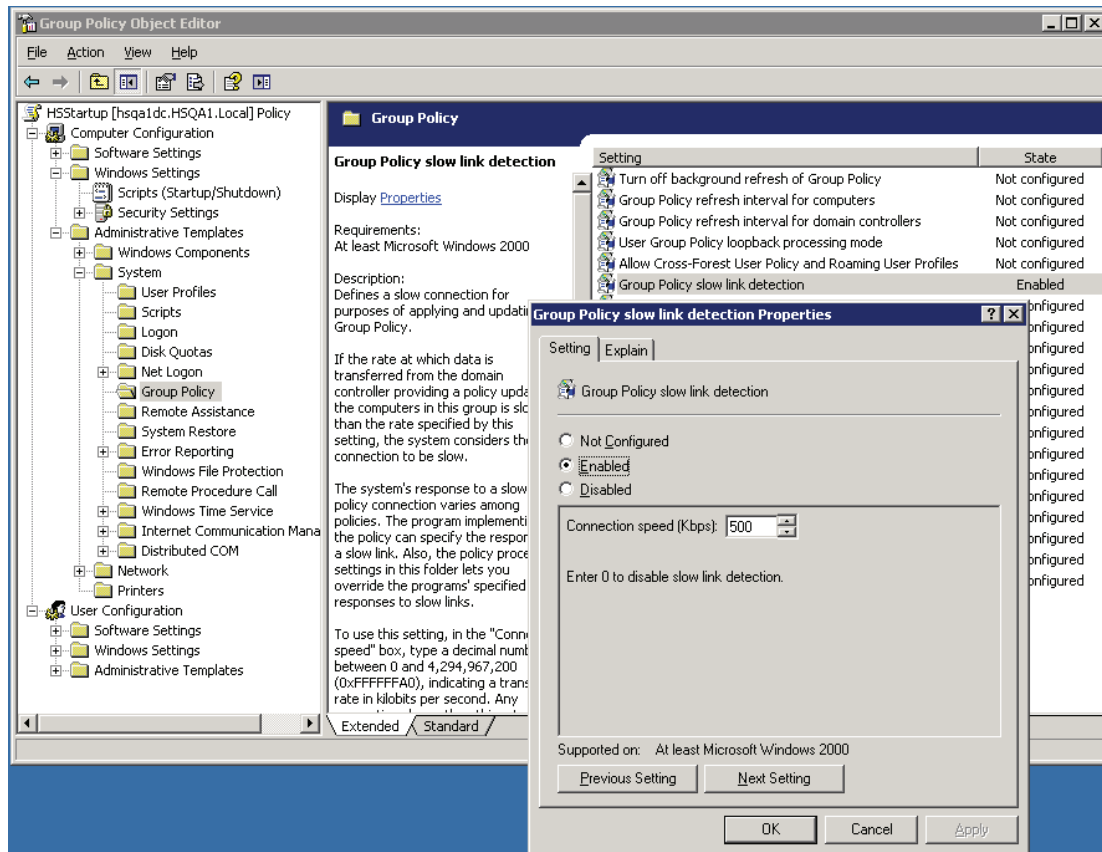


12. With “logon” selected in the left pane, double-click “Always wait for the network at computer startup and logon” within the right pane, select “Enabled”, and click OK



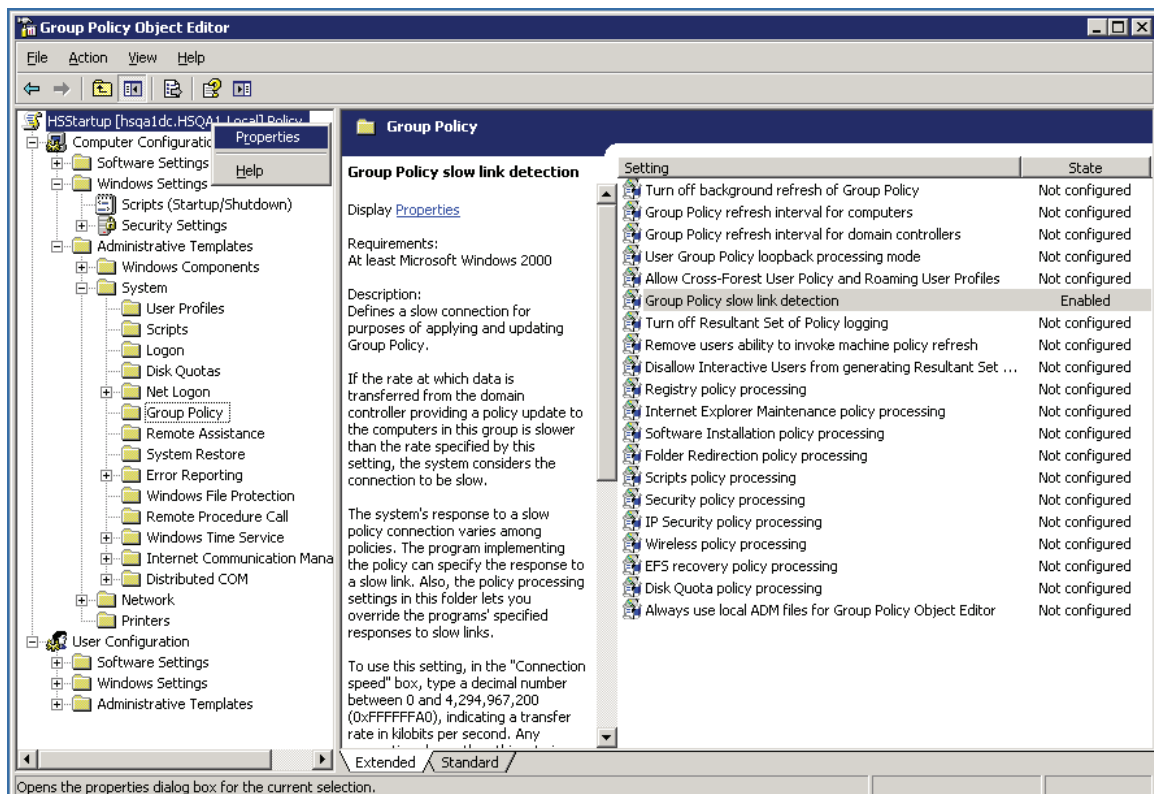
13. With “Group Policy” selected in the left pane, double-click on “Group Policy slow link detection” within the right pane, select “Enabled”, and click OK



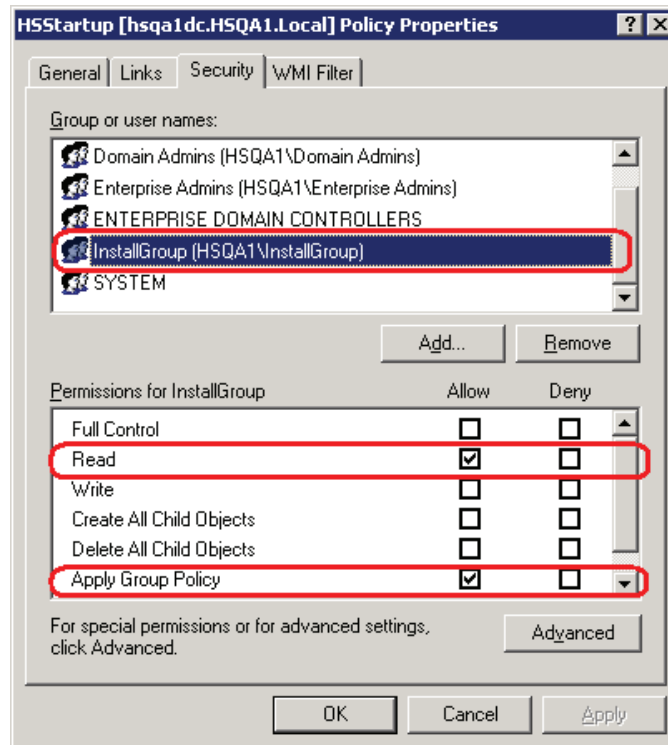


Next, we will apply the policy to computer accounts. To simplify this, it is recommended that all computer accounts be placed in a single group.

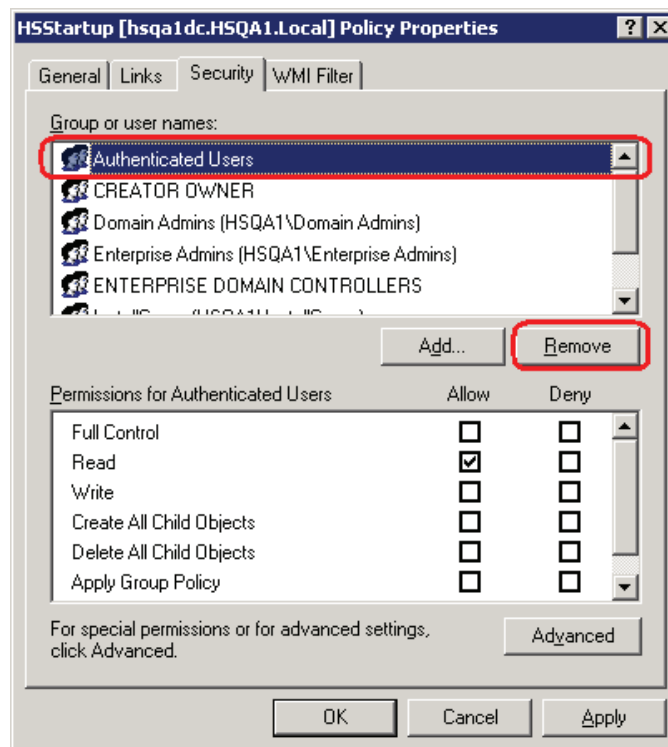
14. Right-click the main GPO node and click on Properties



- From the Security tab, add the computer accounts or the group(s) containing the computer accounts and grant them “Read” and “Apply Group Policy” permissions



- Select Authenticated Users group and click **Remove**



- Click **Apply** and close the windows including the GPO Editor

- Now reboot all the client machines to execute the new GPO.

Note: Refer to <http://support.microsoft.com/kb/840669> for Windows XP Sp1 and Sp2.